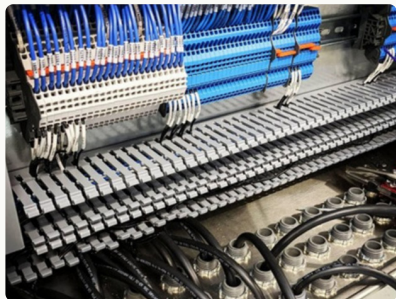


QUICK TAKE: TERMINAL BLOCKS (THE UNSUNG HERO IN PANELS)

Every minute of downtime costs money. By using terminal blocks with removable jumpers and clear labeling, field techs can pinpoint issues in seconds instead of hours - minimizing costly production delays. It's a small design choice with outsized ROI (especially for OEMs supporting remote sites)



VISUAL OF THE MONTH

Every extra minute spent tracing wires in the field is lost productivity. Clear labels, smart spacing, and logical layouts aren't cosmetic - they're the first line of defense against downtime.

email: sales@craftautomation.com

Phone: 269-389-0048

FIELD LESSON: SMARTER LAYOUT, FASTER RESULTS

In a recent retrofit for an OEM, our redesign cut commissioning time by 16 hours. That's two extra shifts of production they didn't lose. Even better - future field techs can now verify wiring in seconds with a glance at the DIN rail layout. A cleaner panel isn't just neater - it's measurable savings.

INDUSTRY WATCH: LABOR SHORTAGES DEMAND SIMPLICITY

Across the industry, skilled technicians are in short supply - and training takes time. OEMs are now prioritizing panel designs and HMI logic that can be understood on Day 1. The winners will be those who make service simple, intuitive, and foolproof.

WORKING ON A NEW BUILD?

Before you lock in your next panel spec, a 30-minute design consult could save you days in the field - and thousands in downtime. Let's talk now, before the costs show up later.

www.craftautomation.com